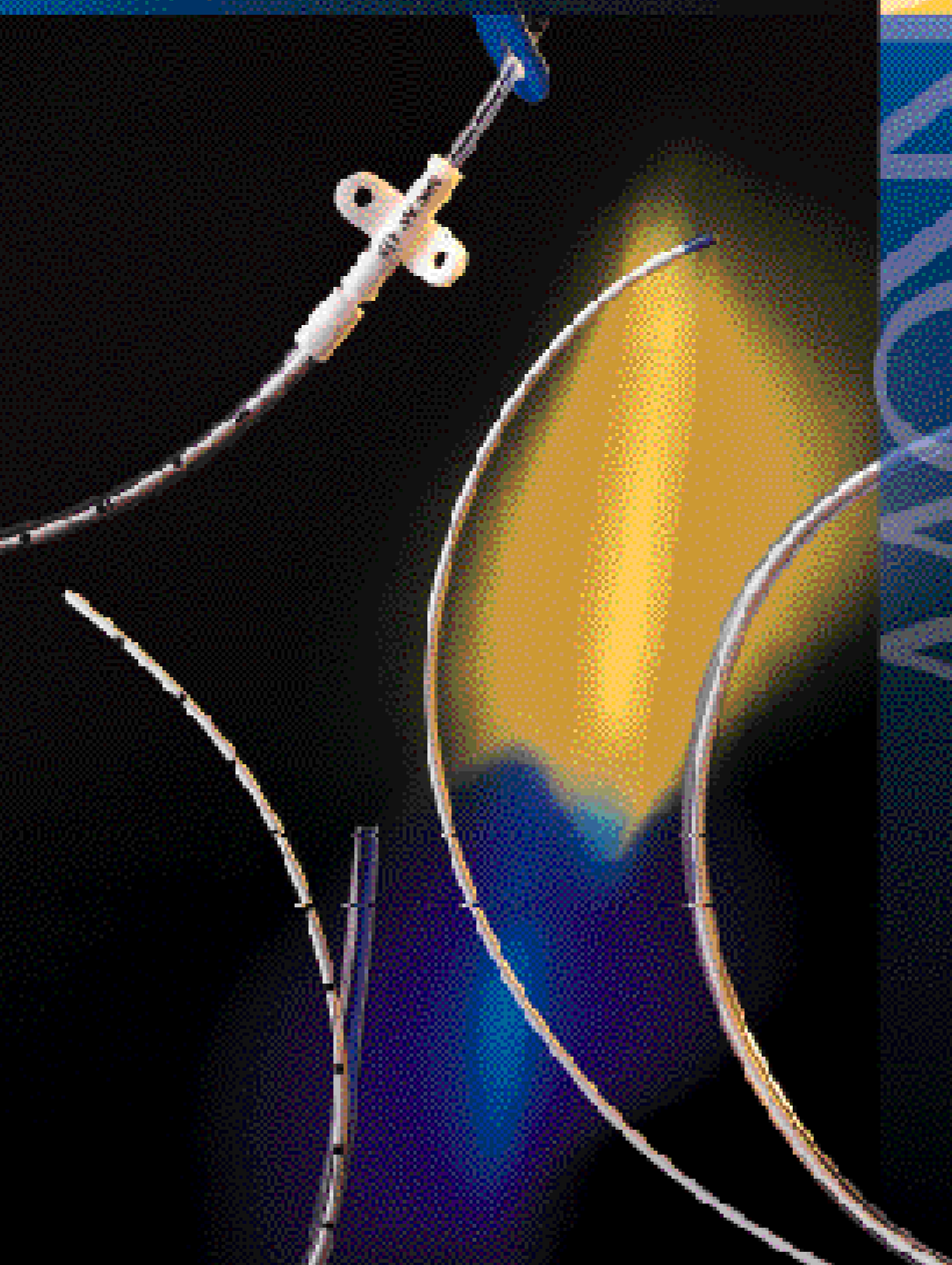
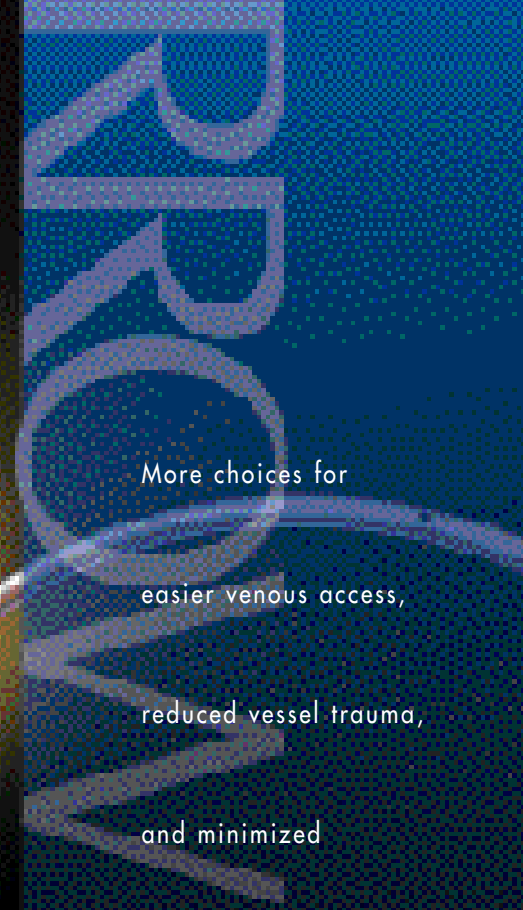


Peripherally Inserted Central Venous Catheters (PICC) and Midline Catheters



More choices for
easier venous access,
reduced vessel trauma,
and minimized
patient risks.



Arrow Peripherally
Inserted Central Venous
Catheters (PICC) and
Midline Catheters

Arrow offers a wide range of latex-free PICC and Midline Catheters for both Interventional Radiology and Nursing applications.



Arrow Catheter Kit PR-05052-MW
and Arrow Catheter Kit PK-01451-S.

The Arrow PICC is the practical vascular access option for many of your patients.

Important benefits of using a PICC.

- Fewer complications than subclavian or jugular insertions
- Fewer restarts than short-term peripheral devices
- Cost effective
- Reduced risk of infection
- Surgery not required
- More comfortable for the patient

Important benefits of using an Arrow polyurethane PICC.

- Polyurethane catheter material has been proven to be exceptionally biocompatible. Gentle to vessel walls, softens in situ.
- The potential for catheter breakage is decreased because of the strength² of polyurethane material. Polyurethane is firmer at room temperature, enabling, in most instances, stylet-free insertion.
- Use of polyurethane material permits higher flows for same french size catheters constructed from silastic material.¹
- Select Arrow PICCs feature the patented polyurethane Arrow Blue FlexTip^{®†}. This special tip is softer than the rest of the catheter and supple enough to deflect upon vessel walls, yet it's firm enough to maintain patency throughout treatment.

† Not available in 3 Fr. models.

Easier, more precise cutting of trimmable catheters.

- A razor-sharp guillotine device offers more control and provides a clean, precise cut without pinching or shearing.



Guillotine device offers more control and provides clean, precise cut.

Clearly labeled as Latex-Free for peace of mind.

- Arrow PICCs and Midline products contain no latex containing components, eliminating the potential risks associated with allergic reactions to latex.

Easier to negotiate tortuous vessels.

- For those clinicians who prefer a catheter with a placement wire to facilitate catheter placement, Arrow offers a product grouping with placement wires.

Reduced risk of catheter-related infection.

- A peel-away contamination guard protects PICC from touch contamination during insertion.
- There is a decreased risk for the patient to develop a catheter-related infection since a PICC or midline is inserted into a peripheral vein and skin flora is less abundant than those on the upper torso and neck regions.³

Product Information

Product No.	French Size	Trimmable	PICC Catheter			Approx. Gauge Size	Number of Lumens	Introducer	
			Useable Length	Placement Wire	Peel-Away Catheter			over a Needle	
PICC Catheterization Kits									
PK-01351-TW	3 Fr.	Y	55cm	Y	20 Ga.	1	17 Ga. x 1.25"	19 Ga. TW	
PK-01451	4 Fr.	N	55cm	N	18 Ga.	1	15 Ga. x 1.25"	17 Ga. TW	
PK-01451-S	4 Fr.	N	55 cm	N	18 Ga.	1	NA	NA	
PK-01451-T	4 Fr.	Y	55cm	N	18 Ga.	1	15 Ga. x 1.25"	17 Ga. TW	
PK-01451-TW	4 Fr.	Y	55cm	Y	18 Ga.	1	15 Ga. x 1.25"	17 Ga. TW	
PK-01451-W	4 Fr.	N	55cm	Y	18 Ga.	1	15 Ga. x 1.25"	17 Ga. TW	
PK-01451-WS	4 Fr.	N	55cm	Y	18 Ga.	1	NA	NA	
PK-01452	4 Fr.	N	55cm	N	18 Ga.	2 (22,22)	15 Ga. x 1.25"	17 Ga. TW	
PK-01452-W	4 Fr.	N	55cm	Y	18 Ga.	2 (22,22)	15 Ga. x 1.25"	17 Ga. TW	
PK-01552	5 Fr.	N	55cm	N	16 Ga.	2 (18,20)	14 Ga. x 1.25"	15 Ga. TW	
PK-01552-S	5 Fr.	N	55cm	N	16 Ga.	2 (18,20)	NA	NA	
PK-01552-W	5 Fr.	N	55cm	Y	16 Ga.	2 (18,20)	14 Ga. x 1.25"	15 Ga. TW	
PK-01552-WS	5 Fr.	N	55cm	Y	16 Ga.	2 (18,20)	NA	NA	
PICC Catheter Only									
PC-01351-TW	3 Fr.	Y	55cm	Y	20 Ga.	1	NA	NA	
PC-01451	4 Fr.	N	55cm	N	18 Ga.	1	NA	NA	
PC-01451-TW	4 Fr.	Y	55cm	Y	18 Ga.	1	NA	NA	
PC-01451-W	4 Fr.	N	55cm	Y	18 Ga.	1	NA	NA	
PC-01452	4 Fr.	N	55cm	N	18 Ga.	2 (22, 22)	NA	NA	
PC-01452-W	4 Fr.	N	55cm	Y	18 Ga.	2 (22, 22)	NA	NA	
PC-01552	5 Fr.	N	55cm	N	16 Ga.	2 (18, 22)	NA	NA	
PC-01552-W	5 Fr.	N	55cm	Y	16 Ga.	2 (18, 20)	14 Ga. x 1.25"	15 Ga. TW	
PICC Peel-Away Introducer Catheter over Needle to be used with catheter (See French Size Column)									
PN-04014	5 Fr.	NA	NA	NA	NA	NA	14 Ga. x 1.25"	15 Ga. TW	
PN-04015	4 Fr.	NA	NA	NA	NA	NA	15 Ga. x 1.25"	17 Ga. TW	
PN-04017	3 Fr.	NA	NA	NA	NA	NA	17 Ga. x 1.25"	19 Ga. TW	
PN-05014	5 Fr.	NA	NA	NA	NA	NA	14 Ga. x 2.5"	15 Ga. TW	
PICC Seldinger Conversion Sets									
PI-01351	3 Fr.	NA	NA	NA	NA	NA	NA	NA	
PI-01451	4 Fr.	NA	NA	NA	NA	NA	NA	NA	
PI-01552	5 Fr.	NA	NA	NA	NA	NA	NA	NA	
PICC Sets***									
PS-01651	5 Fr.	N	50cm	NA	16 Ga.	1	14 Ga. x 2.5"	15 Ga. TW	
PS-01652	5 Fr.	N	50cm	NA	16 Ga.	1	14 Ga. x 2.5"	15 Ga. TW	
PS-01671	5 Fr.	N	70cm	NA	16 Ga.	1	14 Ga. x 2.5"	15 Ga. TW	
PS-01672	5 Fr.	N	70cm	NA	16 Ga.	1	14 Ga. x 2.5"	15 Ga. TW	
PICC Radiology Seldinger Access Sets⁴									
PR-05041	4 Fr.	N	50cm	NA	18 Ga.	1	NA	NA	
PR-05041-LW	4 Fr.	N	50cm	NA	18 Ga.	1	NA	NA	
PR-05041-MW	4 Fr.	N	50cm	NA	18 Ga.	1	NA	NA	
PR-05041-T	4 Fr.	Y	50cm	NA	18 Ga.	1	NA	NA	
PR-05042	4 Fr.	N	50cm	NA	18 Ga.	2 (22, 22)	NA	NA	
PR-05052	5 Fr.	N	50cm	NA	16 Ga.	2 (18, 20)	NA	NA	
PR-05052-LW	5 Fr.	N	50cm	NA	16 Ga.	2 (18, 20)	NA	NA	
PR-05052-MW	5 Fr.	N	50cm	NA	16 Ga.	2 (18, 20)	NA	NA	
PR-07051-T	5 Fr.	Y	70cm	NA	16 Ga.	1	NA	NA	
PR-07051-TLW	5 Fr.	Y	70cm	NA	16 Ga.	1	NA	NA	
PR-07051-TMW	5 Fr.	Y	70cm	NA	16 Ga.	1	NA	NA	
PICC Radiology Peel-Away Sheath over Dilator Only									
PL-05041	4 Fr.	NA	NA	NA	NA	NA	NA	NA	
PL-05052	5 Fr.	NA	NA	NA	NA	NA	NA	NA	
Radiology Wires									
PW-18045	NA	NA	NA	NA	NA	NA	NA	NA	
PW-18080	NA	NA	NA	NA	NA	NA	NA	NA	
PW-18130	NA	NA	NA	NA	NA	NA	NA	NA	

* for peel-away sheath introduction ** for PICC catheter introduction *** PICC Sets designed for International Market. Use in U.S.A. has been limited.

Y = yes N = no NA = not applicable S = Seldinger technique components Placement Wires are 0.015"

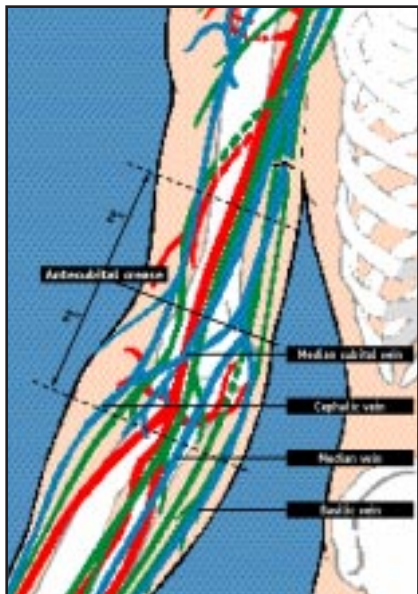
Kits Per Case	Wire Guide*	Peel-Away Sheath over Dilator	Echogenic Tip Introducer Needle	Radiopaque Catheter over a Needle	Floppy Tip Wires**
5	NA	NA	NA	NA	NA
5	NA	NA	NA	NA	NA
5	.016 x 33cm	15 Ga. x 2.75" over 4 Fr.	Y (21 Ga. x 7 cm)	22 Ga. Catheter over 25 Ga. RW	NA
5	NA	NA	NA	NA	NA
5	NA	NA	NA	NA	NA
5	NA	NA	NA	NA	NA
5	.016 x 33cm	15 Ga. x 2.75" over 4 Fr.	Y (21 Ga. x 7 cm)	22 Ga. Catheter over 25 Ga. RW	NA
5	NA	NA	NA	NA	NA
5	NA	NA	NA	NA	NA
5	NA	NA	NA	NA	NA
5	.016 x 33cm	14 Ga. x 2.75" over 5 Fr.	Y (21 Ga. x 7 cm)	22 Ga. Catheter over 25 Ga. RW	NA
5	NA	NA	NA	NA	NA
5	.016 x 33cm	14 Ga. x 2.75" over 5 Fr.	Y (21 Ga. x 7 cm)	22 Ga. Catheter over 25 Ga. RW	NA
5	NA	NA	NA	NA	NA
5	NA	NA	NA	NA	NA
5	NA	NA	NA	NA	NA
5	NA	NA	NA	NA	NA
5	NA	NA	NA	NA	NA
5	NA	NA	NA	NA	NA
10	NA	NA	NA	NA	NA
10	NA	NA	NA	NA	NA
10	NA	NA	NA	NA	NA
10	NA	NA	NA	NA	NA
10	.016 x 33 cm	17 Ga. x 2.75" over 3 Fr.	Y (21 Ga. x 7 cm)	22 Ga. Catheter over 25 Ga. RW	NA
10	.016 x 33 cm	15 Ga. x 2.75" over 4 Fr.	Y (21 Ga. x 7 cm)	22 Ga. Catheter over 25 Ga. RW	NA
10	.016 x 33 cm	14 Ga. x 2.75" over 5 Fr.	Y (21 Ga. x 7 cm)	22 Ga. Catheter over 25 Ga. RW	NA
10	NA	NA	NA	NA	NA
10	NA	NA	NA	NA	NA
10	NA	NA	NA	NA	NA
10	NA	NA	NA	NA	NA
5	.018 x 45 cm	15 Ga. x 4" over 4 Fr.	Y (21 Ga. x 7 cm)	NA	NA
5	.018 x 45 cm	15 Ga. x 4" over 4 Fr	Y (21 Ga. x 7 cm)	NA	130cm ****
5	.018 x 45 cm	15 Ga. x 4" over 4 Fr	Y (21 Ga. x 7 cm)	NA	80cm ****
5	.018 x 45 cm	15 Ga. x 4" over 4 Fr	Y (21 Ga. x 7 cm)	NA	N
5	.018 x 45 cm	15 Ga. x 4" over 4 Fr	Y (21 Ga. x 7 cm)	NA	N
5	.018 x 45 cm	14 Ga. x 4" over 5 Fr.	Y (21 Ga. x 7 cm)	NA	N
5	.018 x 45 cm	14 Ga. x 4" over 5 Fr.	Y (21 Ga. x 7 cm)	NA	130cm ****
5	.018 x 45 cm	14 Ga. x 4" over 5 Fr.	Y (21 Ga. x 7 cm)	NA	80cm ****
5	.018 x 45 cm	14 Ga. x 4" over 5 Fr.	Y (21 Ga. x 7 cm)	NA	N
5	NA	NA	Y (21 Ga. x 7 cm)	NA	130cm ****
5	NA	NA	Y (21 Ga. x 7 cm)	NA	80cm ****
25	NA	15 Ga. x 4" over 4 Fr.	NA	NA	NA
25	NA	14 Ga. x 4" over 5 Fr.	NA	NA	NA
5	NA	NA	NA	NA	45cm
5	NA	NA	NA	NA	80cm ****
5	NA	NA	NA	NA	130cm ****

**** Teflon®-coated



The Arrow Midline.

Band of Opportunity



Easier insertions from start to finish.

- Both Arrow PICCs and Midlines are inserted through an introducer catheter, which is peeled away and easily removed once the catheter is in place.
- Sealed hub accepts a Luer-Slip syringe.
- Centimeter markings along the catheter body help to advance the catheter to the proper insertion depth.

An effective, latex-free alternative for intermediate-term IV therapy.

Designed to simplify venous access and reduce patient trauma.

- Midlines may be appropriate if the therapy will last no more than 2-4 weeks and the solution can be tolerated by a peripheral vessel.

- Designed to prevent multiple catheter venipunctures (every 48 to 72 hours) associated with conventional, short peripheral catheters.
- Shorter length (20cm) than the PICC. Trimmable.
- Peripherally inserted at the antecubital fossa.

The Arrow Midline Catheter.

Simplified catheter securement.

- Two site securement options are available: the winged catheter hub and the winged catheter clamp with its fastener.
- Both sites can attach to the adhesive-backed StatLock[®] anchoring device, which neatly secures the catheter to the patient's arm (steri strips are also included).
- There is no need to trim our 4 Fr. and 5 Fr. Blue FlexTip[®] catheters to fit your patient. (Trimmable catheters available in 3Fr., 4Fr. and 5Fr.)

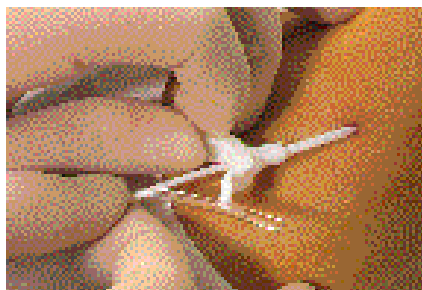
Choose from a variety of PICC and Midline products to meet your needs.

Arrow offers single-lumen and double-lumen lines; 3Fr., 4Fr., 5Fr. sizes; Blue FlexTip[®], trimmable variety; Seldinger Conversion Sets; Seldinger Kits; and PICC Radiology Seldinger Sets with 80cm or 130cm floppy-tipped, Teflon[®]-coated guidewires and Echogenic Tip needles. Arrow Midline catheters are available in kits and sets in a variety of sizes.[‡] For more information, call your Arrow representative or contact us directly by calling 800 523-8446 or 610 378-0131.

[‡] Check for individual size availability.



Locking sheath/dilator/echogenic needle.



Peel-away contamination guard protects against external contamination.



Improved sealed hub design easily accepts a Luer-Slip syringe.

Arrow Peripherally
Inserted Central Venous
Catheters (PICC) and
Midline Catheters

Product Information

Latex-Free Midline Catheter Kit

Product No.	French Size	Useable Length	No. of Lumens	Sets Per Case
MK-02031-TW	3 Fr.	20cm	1	5
MK-02041-T	4 Fr.	20cm	1	5
MK-02051-T	5 Fr.	20cm	1	5

Latex-Free Midline Catheter Set

Product No.	French Size	Useable Length	No. of Lumens	Sets Per Case
MS-02031-TW	3 Fr.	20cm	1	5
MS-02041-T	4 Fr.	20cm	1	5
MS-02051-T	5 Fr.	20cm	1	5

Accessories

Product No.	Description	Use with	Per Box
CC-00004	Pink/Blue Box Clamp	4 Fr.	25
CC-00005	Yellow/Blue Box Clamp	5 Fr.	25
SL-01351-D	StatLock® Catheter Anchoring Device (diaphoretic adhesive)	can be used with any PICC or Midline	40

Earn CEUs through Arrow's Continuing Education Program.

Arrow offers a comprehensive, eight-hour course focusing on the insertion of the PICC and Midline catheter. Arrow International is a provider of continuing education units through the American Association of Critical Care Nurses (AACN).

Arrow Low Profile B•Port™.

The Arrow Low Profile B•Port™ (Product No. AP-06046) offers another peripheral access option. The port features a smaller, lighter portal body and lower overall profile making it an ideal fit for peripheral placement. Contact Arrow for information on our complete line of ports.

For information regarding distribution in your area, contact:

ARROW
INTERNATIONAL

www.arrowintl.com

UNITED STATES

Arrow International, Inc.
2400 Bernville Road
Reading, PA 19605, USA
Phone: 610-378-0131
Toll-free: (800) 523-8446
Fax: 610-478-3199
Orders-only toll-free fax: (800) 343-2935
Email: Customer.Service@arrowintl.com

AFRICA

Arrow Africa (Pty) Ltd.
Cambridge Commercial Park
22 Witkoppen Road, Paulshof Extension
Sandton 2054, Republic of South Africa
Phone: (111) 807 4887
Fax: (111) 807 4994
Email: tlc@arrowafrica.co.za

CANADA

Arrow Medical Products, Ltd.
2300 Bristol Circle, Unit 1
Oakville, Ontario L6H 5S3
Phone: (905) 829-9473
Toll-free: (800) 387-7819
Fax: (905) 829-9414
Email: arrow.canada@arrowintl.com

EUROPE

Arrow Deutschland GmbH
Justus-von-Liebig-Strasse 2
D-85435 Erding, Germany
Phone: 08122 9820-0
Fax: 08122 40384
Email: service@arrow-deutschland.de

Arrow France S.A.
Atlantic Parc, « Les Pyramides » No. 11
Route de Pitoys, P.A. de Maignon
64600 Anglet, France
Phone: 05 59 31 34 90
Fax: 05 59 31 34 91
Email: arrow.sa@wanadoo.fr

Arrow Hellas A.E.E.
230 Kifissias Avenue
Halandri, 152 31
Athens, Greece
Phone: 6777717 / 6777311
Fax: 6777911
Email: arrowhel@hol.gr

Arrow Holland Medical Products B.V.
Flevolaan 9A
NL 1382 JX
Weesp, The Netherlands
Phone: 294 280 620
Fax: 294 412 300
Email: c_service@arrow-holland.nl

Arrow Iberia S.A.
Avenida de Valgrande 14
28108 Alcobendas
Madrid, Spain
Phone: 916 621 267
Fax: 916 619 756
Email: arrow@arrow-iberia.es

Arrow International CR, a.s.
Pražská 209
500 04 Hradec Králové
Czech Republic
Phone: 049 575 9111
Fax: 049 575 9222
Email: jilka_vodstrcilova@arrow.cz

Arrow Slovensko Piešťany s.r.o.
Valová 49
921 01 Piešťany, Slovakia
Phone/Fax: 0838/77 25428
Email: arrow@arrow.sk

JAPAN

Arrow Japan, Ltd.
Nagaoka Bldg.
3-16, Kita-Otsuka 3-chome
Toshima-ku, Tokyo 170-0004, Japan
Phone: 03-5974-1701
Fax: 03-5974-1845
Email: arrowjapan@msn.com

Arrow Japan, Ltd.
Osaka Branch
9F Shinosaka Uenotoyo Bldg.
7-4-17 Nishinakanoshima
Yodogawa-ku, Osaka 532-0011, Japan
Phone: 06-6390-4554
Fax: 06-6390-4544
Email: arrowjapan@msn.com

MEXICO

Arrow Internacional de Mexico S.A. de C.V.
Moliere No. 128, Col. Polanco
11560 Mexico City, Mexico
Phone: 5281-2291
Fax: 5282-1359
Email: arrowmex@mail.internet.com.mx

- 1 Angle JF, Matsumoto AH, Skalak TC, O'Brien RF, Hartwell GD, Tegtmeyer CJ. Flow characteristics of peripherally inserted central catheters. *JVIR*. 1997;8:569-577.
 - 2 Rivitz SM, Drucker EA. Power injection of peripherally inserted central catheters. *JVIR*. 1997;8:857-863.
 - 3 Maki DG, Stolz SM, Wheeler S, Mermel LA. Prevention of a central venous catheter-related bloodstream infection with an antiseptic-impregnated catheter; a randomized controlled trial. *An In Med*. August 1997.
 - 4 Utilizing Seldinger technique for insertion of introducer sheath.
- StatLock® is a registered trademark of Venetec International Inc.

Teflon® is a registered trademark of DuPont Corporation.

Caution: U.S. Federal Law limits this device to sale by or on order of a physician. Contents of unopened, undamaged package are sterile. Contains no medication. Disposable. Refer to package insert for current warnings, precautions, and instructions for use.

Contact Arrow International, Inc. for reference information on the enclosed.

© 2000 Arrow International, Inc. All rights reserved.

Printed in U.S.A.
PIC-C 12/00 5M

